

Image Library - SEARCH: Process ids(206 ids)

Parameters

Records Included: All records
Filter Image by Orientation: None
Aspect Ratio: Normalized 3:2

Result Summary

Total Records: 206

Re-render images: 4 per row



Abagrotis anchocelioides
BIN URI: BOLD:ACE6487



Acleris forsskalleana
BIN URI: BOLD:AA8796



Acleris logjana
BIN URI: BOLD:AA8754



Acleris negundana
BIN URI: BOLD:AAC9885



Acleris nivisellana
BIN URI: BOLD:AAB8122



Acleris schalleriana
BIN URI: BOLD:AAB2825



Acleris chalybeana
BIN URI: BOLD:AAA7667



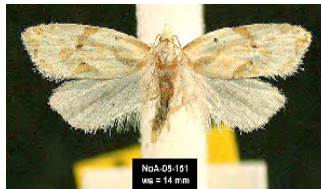
Acleris semipurpurana
BIN URI: BOLD:AAB9410



Acrocercops astericola
BIN URI: BOLD:AAD3996



Aethes interruptofasciata
BIN URI: BOLD:AAJ1300



Aethes mymara
BIN URI: BOLD:ACK1363



Aethes mymara
BIN URI: BOLD:AAE0202



Aethes
BIN URI: BOLD:ACL4812



Aethes
BIN URI: BOLD:ACN0602



Aethes
BIN URI: BOLD:ACL4611



Aethes
BIN URI: BOLD:ACN0603



Agonopterix arenella
BIN URI: BOLD:AAC6982



Agonopterix argillacea
BIN URI: BOLD:ACF4387



Agonopterix canadensis
BIN URI: BOLD:AAC0205



Agonopterix eupatoriella
BIN URI: BOLD:ACF2846



Agonopterix pulvipennella
BIN URI: BOLD:AA7550



Agonopterix
BIN URI: BOLD:ABW0988



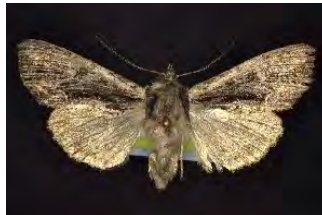
Anacampsis
BIN URI: BOLD:AA4519



Anathix ralla
BIN URI: BOLD:AAC9569



Apamea impulsaria
BIN URI: BOLD:AA5601



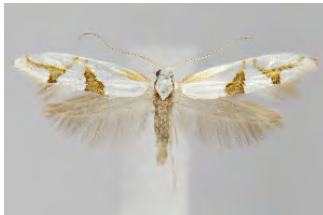
Apamea nigrior
BIN URI: BOLD:AAE7006



Aphomia sociella
BIN URI: BOLD:AA45606



Argyresthia goedartella
BIN URI: BOLD:AAA8886



Argyresthia oreasella
BIN URI: BOLD:AAC0903



Asaphocrita busckella
BIN URI: BOLD:AA8938



Bucculatrix ainsliella



Bucculatrix
BIN URI: BOLD:ACK9901



Bucculatrix
BIN URI: BOLD:AAI3849



Caloptilia coroniella
BIN URI: BOLD:ACF2997



Caloptilia negundella
BIN URI: BOLD:AAD2569



Caloptilia packardella
BIN URI: BOLD:AAD2590



Caloptilia stigmatella
BIN URI: BOLD:AAA9982



Caloptilia
BIN URI: BOLD:ACB0694



Caloptilia canadensisella
BIN URI: BOLD:AAE7388



Cameraria saccharella
BIN URI: BOLD:AAH4493



Cameraria ulmella
BIN URI: BOLD:AAI3875



Campaea perlata
BIN URI: BOLD:AAA2078



Cenopis diluticostana
BIN URI: BOLD:AA87923



Cenopis pettitana
BIN URI: BOLD:AA80124



Cenopis reticulatana
BIN URI: BOLD:AAA9619



Chionodes thoraceochrella
BIN URI: BOLD:AAA4438



Chionodes obscurusella
BIN URI: BOLD:AAA4439



Chionodes
BIN URI: BOLD:AAD2565



Choristoneura rosaceana
BIN URI: BOLD:AAA1517



Chrysoeuchia topiarius
BIN URI: BOLD:AAA2518



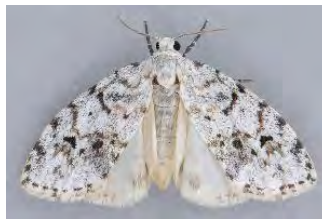
Chytolita morbidalis
BIN URI: BOLD:AAA2868



Chytolita sp. 2
BIN URI: BOLD:AB26822



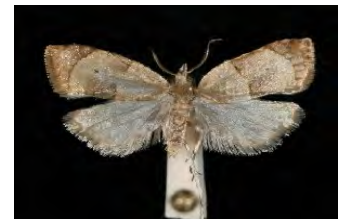
Chytonix palliatricula
BIN URI: BOLD:AAA6619



Clemensia albata
BIN URI: BOLD:ACF3441



Clepsis melaleucana
BIN URI: BOLD:AAA5620



Coelostathma discopunctana
BIN URI: BOLD:AAC0126



Coleophora laticornella
BIN URI: BOLD:ACF4740



Coleophora JL225
BIN URI: BOLD:ACK2472



Coleophora limospennella
BIN URI: BOLD:AAE1232



Coleophora ostryae
BIN URI: BOLD:AAA4506



Coleophora kalmiella
BIN URI: BOLD:AAB9343



Coleophora serratella
BIN URI: BOLD:AAB5543



Coleophora pruniella
BIN URI: BOLD:AAA7822



Coleophora comptoniella
BIN URI: BOLD:ABY6070



Coleophora duplcis
BIN URI: BOLD:AAA3993



Coleotechnites quercivorella
BIN URI: BOLD:AAA4971



Corytophora
BIN URI: BOLD:AAH6603



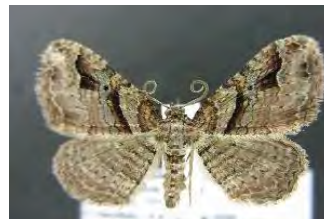
Cosmopterix abdita
BIN URI: BOLD:AAA4000



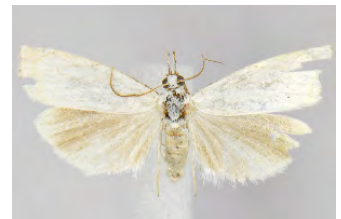
Cosmopterix pulchrimella
BIN URI: BOLD:AAD9013



Cosmopterix
BIN URI: BOLD:ABZ0184



Costaconvexa centrostrigaria
BIN URI: BOLD:AAA4271



Crambus albellus
BIN URI: BOLD:AAB1584



Dichomeris ligulella
BIN URI: BOLD:AAA8109



Dichomeris ochripalpella
BIN URI: BOLD:AAI9564



Dichomeris
BIN URI: BOLD:ABY6332



Dichomeris vindex
BIN URI: BOLD:AAF5469



Dichomeris inversella
BIN URI: BOLD:ACF4855



Dichrorampha
BIN URI: BOLD:ACO7163



Dryadula visaliella
BIN URI: BOLD:ACA7671



Duospina trichella
BIN URI: BOLD:AAI2086



Dyspyralis illocata
BIN URI: BOLD:AAB6432



Ectoedemia argyropeza
BIN URI: BOLD:AAC1036



Ectoedemia ochrefasciella
BIN URI: BOLD:ABW0989



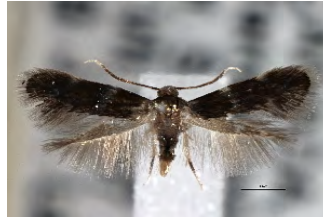
Ectoedemia populella
BIN URI: BOLD:AAB9665



Eido trimaculella
BIN URI: BOLD:AAB7910



Elachista irrorata
BIN URI: BOLD:AAK7314



Elachista madarella
BIN URI: BOLD:ACB9461



Elachista illectella
BIN URI: BOLD:AAD9052



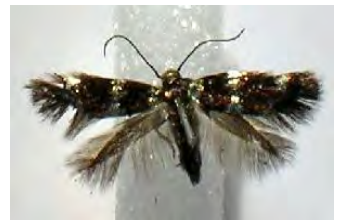
Elachista griseicornis
BIN URI: BOLD:AAD8086



Elachista
BIN URI: BOLD:AAK6200



Elachista
BIN URI: BOLD:ACK1288



Elachista
BIN URI: BOLD:AAK6205



Elachista
BIN URI: BOLD:ACF1706



Ennomos subsignaria
BIN URI: BOLD:AAB4783



Epermenia albapunctella
BIN URI: BOLD:AAF0142



Epiblema obfuscana
BIN URI: BOLD:AAA8195



Epicallima argenticinctella
BIN URI: BOLD:AAA9667



Episimus argutana
BIN URI: BOLD:AAB4915



Eucosma comatulana
BIN URI: BOLD:AAC2220



Eudonia strigalis
BIN URI: BOLD:AAB8093



Scoparia basalis-cineromedia
BIN URI: BOLD:AAC3633



Eupithecia borealis
BIN URI: BOLD:AAB1830



Eupithecia chlorofasciata
BIN URI: BOLD:AAA4178



Euplexia benesimilis
BIN URI: BOLD:AAA4097



Geina sheppardi
BIN URI: BOLD:AAC2637



Gnorimoschema
BIN URI: BOLD:AB23334



Halysidota tessellaris
BIN URI: BOLD:AAA3425



Heliozela
BIN URI: BOLD:ACK4960



Hellinsia glenni
BIN URI: BOLD:AAB3656



Herpetogramma thestealis
BIN URI: BOLD:AAA2323



Holcocera chalcifrontella
BIN URI: BOLD:AB22738



Homochlodes fritillaria
BIN URI: BOLD:AAB4027



Hmoseitia fasciella
BIN URI: BOLD:AAE1659



Hmoseitia DRD49
BIN URI: BOLD:AAK5444



Hmoseitia
BIN URI: BOLD:AAI1860



Horisme intestinata
BIN URI: BOLD:AAA6438



Hydrelia albifera
BIN URI: BOLD:AA82475



Hypagyrtis esther
BIN URI: BOLD:AAA4056



Hypagyrtis piniata
BIN URI: BOLD:AAA4057



Hypena scabra
BIN URI: BOLD:AAA4222



Hyphantria sp. 1
BIN URI: BOLD:AAA2436



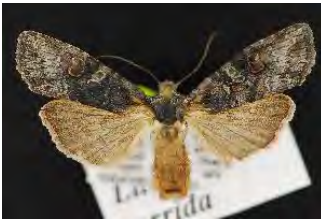
Idia forbesii
BIN URI: BOLD:AB21974



Idia julia
BIN URI: BOLD:AAA3327



Idia lubricalis complex
BIN URI: BOLD:ABY9096



Lithophane torrida
BIN URI: BOLD:AA85821



Lymantriinae
BIN URI: BOLD:AAA2052



Machimia tentoriferella
BIN URI: BOLD:AAA7892



Marmara serotinnella
BIN URI: BOLD:AA63613



Marmara
BIN URI: BOLD:ACK2845



Marmara
BIN URI: BOLD:AAH2440



Mathildana filipria
BIN URI: BOLD:AAC8910



Metarranthis refractaria
BIN URI: BOLD:ACE8043



Metarranthis hypochraria
BIN URI: BOLD:AAA8058



Microcrambus biguttellus
BIN URI: BOLD:AAA8960



Microcrambus elegans
BIN URI: BOLD:AAA893



Microcrambus minor
BIN URI: BOLD:AAA4895



Morpho terminella
BIN URI: BOLD:AA4784



Morpho
BIN URI: BOLD:ACK4013



Monopis dorsistrigella
BIN URI: BOLD:AAE4746



Morrisonia confusa
BIN URI: BOLD:AAA6552



Morrisonia latex
BIN URI: BOLD:AA80781



Nemopogon auropulvella
BIN URI: BOLD:AAC5294



Nemopogon tyloides
BIN URI: BOLD:AAF1562



Nemopogon ophrionella
BIN URI: BOLD:AAE4218



Noctua pronuba
BIN URI: BOLD:AAA2632



Olethreutes auricapitata
BIN URI: BOLD:AAF4647



Olethreutes exoletum
BIN URI: BOLD:ACE9513



Olethreutes fasciatana
BIN URI: BOLD:AAC2533



Olethreutes valdanum
BIN URI: BOLD:ACF0609



Operophtera bruceata
BIN URI: BOLD:AAA2999



Orthosia hibisci
BIN URI: BOLD:AAA4128



Panopoda rufimargo
BIN URI: BOLD:AAA7227



Parornix DRD01
BIN URI: BOLD:AAI2427



Parornix sp.
BIN URI: BOLD:AAF8198



Parornix
BIN URI: BOLD:ABY0626



Perimede erransella
BIN URI: BOLD:AA81460



Perispasta caeculalis
BIN URI: BOLD: AAC0745



Phaneta ochroterminana
BIN URI: BOLD: AAB2982



Phigalia titea
BIN URI: BOLD: AAA5234



Phyllocnistis ampelopsiella
BIN URI: BOLD: AAA3015



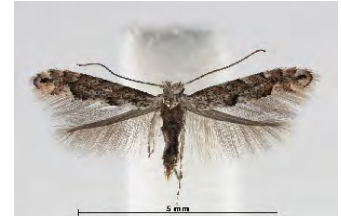
Phyllocnistis vitigenella
BIN URI: BOLD: AA03014



Phylonorycter clemensella
BIN URI: BOLD: AAN8981



Phylonorycter lucetiella
BIN URI: BOLD: AAH501



Phylonorycter salicifoliella
BIN URI: BOLD: AAD4915



Phylonorycter cf. blcardella
BIN URI: BOLD: AAC4329



Gracillariidae
BIN URI: BOLD: ACB9323



Phylonorycter emberizepenella
BIN URI: BOLD: AAF6919



Phylonorycter
BIN URI: BOLD: AAH4497



Pigritia n. spP7
BIN URI: BOLD: AAC6102



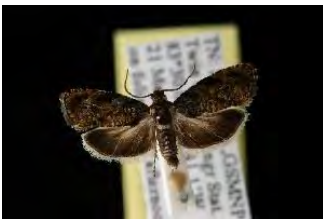
Platynota idaeusalis
BIN URI: BOLD: ABY7901



Pleuroprucha asthenaria
BIN URI: BOLD: AAA7633



Plutella xylostella
BIN URI: BOLD: AAA1513



Pristerognatha fuligana
BIN URI: BOLD: AAC7661



Pseudexentera virginiana
BIN URI: BOLD: AAC9014



Psilocorsis reflexella
BIN URI: BOLD: AAW5755



Psyche casta
BIN URI: BOLD: ACL8669



Psyche casta
BIN URI: BOLD:AAE5848



Renia adspersigillus
BIN URI: BOLD:AAE6692



Renia factiosalis
BIN URI: BOLD:AAA8624



Rhopobota naevana
BIN URI: BOLD:AAA9812



Satyrium liparops
BIN URI: BOLD:AAE9538



Scardiella approximata
BIN URI: BOLD:AAD2340



Schizura unicornis
BIN URI: BOLD:AAA3873



Scoparia biplagialis
BIN URI: BOLD:AAA1518



Scopula timandrata
BIN URI: BOLD:AAA4208



Sonia canadana
BIN URI: BOLD:AAE8640



Stathmopoda aenea
BIN URI: BOLD:AAD0510



Stigmella prunifoliella
BIN URI: BOLD:ACG8426



Taygete attributella
BIN URI: BOLD:AAE7542



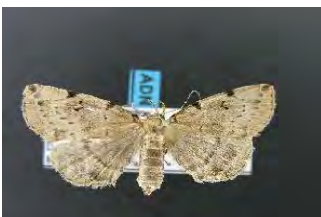
Trichodezia albovittata
BIN URI: BOLD:AAE6926



Urola nivalis
BIN URI: BOLD:AAA8678



Zanclognatha laevigata
BIN URI: BOLD:ABZ7767



Zanclognatha lituralis
BIN URI: BOLD:AAE3774



Zanclognatha pedipalis
BIN URI: BOLD:ABZ2935



Zanclognatha jacchusalis
BIN URI: BOLD:AAA5206



Nepticulinae
BIN URI: BOLD:ACK5530



Tortricinae
BIN URI: BOLD:ACK1584



Asaphocrita aphidiella
BIN URI: BOLD:AAC4238



Hyatopa vestaliella
BIN URI: BOLD:AAG8581



Trifurcula saccharella
BIN URI: BOLD:AAH4494



Gracillariidae
BIN URI: BOLD:ACD1959



Lithocolletinae
BIN URI: BOLD:ACK2164



Lepidoptera
BIN URI: BOLD:ACL1748



Gelechiidae
BIN URI: BOLD:ABW0309



Cochylis hoffmanana
BIN URI: BOLD:AAB3571



Anacampsis agrimoniella
BIN URI: BOLD:AAP5403

Copyright © 2014 BOLD Systems. All rights reserved.