

DNA Barcode-based Assessment of Arthropod Diversity in Canada's National Parks:

Progress Report for Banff National Park



**Report prepared by the Bio-Inventory and Collections Unit,
Biodiversity Institute of Ontario, University of Guelph
December 2015**



The Biodiversity Institute of Ontario at the University of Guelph is an institute dedicated to the study of biodiversity at multiple levels of biological organization, with particular emphasis placed upon the study of biodiversity at the species level. Founded in 2007, BIO is the birthplace of the field of DNA barcoding, whereby short, standardized gene sequences are used to accelerate species discovery and identification.

www.biodiversity.uoguelph.ca
Twitter handle @BIO_Outreach

International Barcode of Life Project

www.ibol.org

Canadian Centre for DNA Barcoding

www.ccdb.ca

Barcode of Life Datasystems

www.boldsystems.org

BIObus

www.biobus.ca

Twitter handle @BIObus_Canada

School Malaise Trap Program

www.malaisetrapprogram.ca

DNA Barcoding blog

www.dna-barcoding.blogspot.ca

INTRODUCTION

The Canadian National Parks (CNP) Malaise Program, a collaboration between Parks Canada and the Biodiversity Institute of Ontario (BIO), represents a first step toward the acquisition of detailed temporal and spatial information on terrestrial arthropod communities across Canada. The program addresses the current lack of a systematic approach for tracking shifts in the species composition of terrestrial communities in response to environmental disturbance or global climate change. By contrast, water quality assessments are routinely based on surveys of the species composition of freshwater invertebrates. Historically, assessments of terrestrial environments have lacked a standard protocol to derive a biotic index, and instead have generally relied on surveys of a few indicator taxa (e.g., birds, vascular plants) supplemented by qualitative habitat assessments. The use of indicator taxa disregards an important reality – most species in terrestrial ecosystems are arthropods.

Past efforts to include arthropods in terrestrial assessments have faced two serious barriers: ineffective sampling due to habitat complexities, and unreliable tools for species identification. The latter barrier has now been circumvented by DNA barcoding, a method that utilizes sequence variation in a standardized gene fragment to rapidly sort and objectively differentiate species (Hebert et al., 2003). This approach also makes it possible to carry out large-scale sampling programs and provides a time- and cost-efficient approach for biodiversity assessments. The present study represents a pilot phase of a long term program that will involve regular assessments of arthropod diversity at sites across Canada. To

date, the CNP Malaise Program has sampled in all 43 accessible Canadian National Parks (Figure 1). The program was initiated in 2012 with the participation of 14 national parks in Central and Western Canada. In 2013, an additional 14 parks in Central and Eastern Canada were involved. Having collected from Western, Central, and Eastern Canadian National Parks, the program targeted Northern and remote National Parks in its third year (Figure 2). While only one Malaise trap was deployed in each park in 2012, two Malaise traps were deployed in 2013 and 2014 to increase overall specimen catch.

Due to the isolation and inaccessibility of some regions, Parks Canada staff and researcher volunteers facilitated the program by deploying and servicing the traps during their short field seasons. In addition, BIO conducted the CNP Malaise Program for some Southern Parks that were not previously sampled and also revisited several Parks to augment past collections. Weekly samples were preserved in 95% ethanol and then held at -20°C. At the end of the season, samples were shipped to BIO for analysis.

The trap samples were accessioned, specimens were identified to order, arrayed, labeled, databased, and tissue-sampled for genetic analysis (Figure 3). All arthropods were barcoded, with the exception of a few very common species (e.g., honeybee) where only a limited number of individuals from each trap sample were analyzed. Standard barcoding protocols (<http://ccdb.ca/resources.php>) were followed to recover the barcode region of the cytochrome c oxidase I (COI) gene. The barcode sequences, specimen images and collateral data

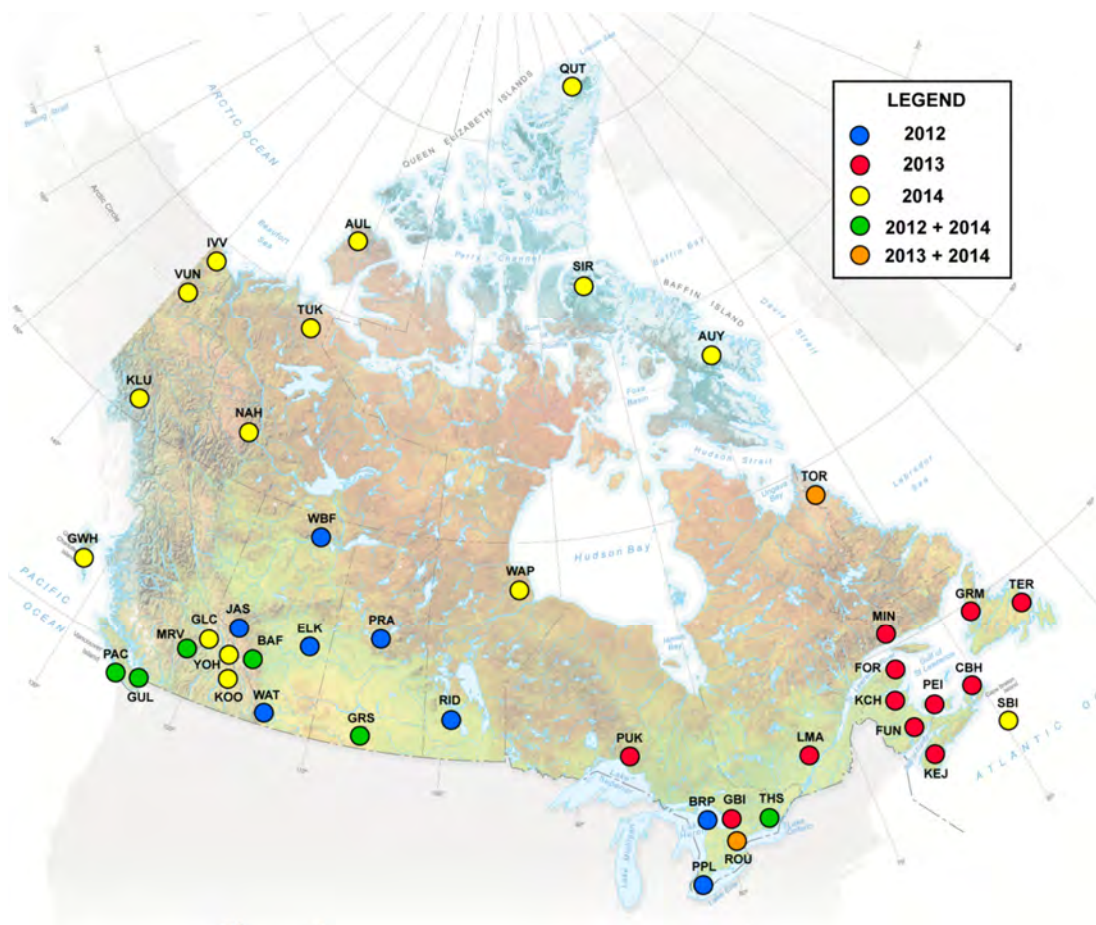


Figure 1. CNP Malaise Program sampling sites from 2012-2014.

2012

BRP	Bruce Peninsula National Park
ELK	Elk Island National Park
JAS	Jasper National Park
PPL	Point Pelee National Park
PRA	Prince Albert National Park
RID	Riding Mountain National Park
WAT	Waterton Lakes National Park
WBF	Wood Buffalo National Park

2013

CBH	Cape Breton Highlands National Park
FUN	Fundy National Park
FOR	Forillon National Park
GBI	Georgian Bay Islands National Park
GRM	Gros Morne National Park
KCH	Kouchibouguac National Park
KEJ	Kejimikujik National Park
LMA	La Mauricie National Park
MIN	Mingan Archipelago National Park
PEI	Prince Edward Island National Park
PUK	Pukaskwa National Park
TER	Terra Nova National Park

2014

AUL	Aulavik National Park
AUY	Auyuittuq National Park
GLC	Glacier National Park
GWH	Gwaii Haanas National Park
IVV	Ivvavik National Park
KLU	Kluane National Park
KOO	Kootenay National Park
NAH	Nahanni National Park
QUT	Quttinirpaaq National Park
SBI	Sable Island National Park
SIR	Sirmilik National Park
TUK	Tuktuk Nogait National Park
VUN	Vuntut National Park
WAP	Wapusk National Park
YOH	Yoho National Park

2012 + 2014

BAF	Banff National Park
GRS	Grasslands National Park
GUL	Gulf Islands National Park
MRV	Mount Revelstoke National Park
PAC	Pacific Rim National Park
THS	Thousand Islands National Park

2013 + 2014

ROU	Rouge National Park
TOR	Torngat Mountains National Park

are stored in the Barcode of Life Data Systems (BOLD; www.boldsystems.org). The project is publicly available in the 'Canadian National Parks Malaise Program' campaign on BOLD. Barcoded specimens were assigned to an existing or new Barcode Index Number (BIN), a proxy for a formal Linnean species name, as outlined by Ratnasingham & Hebert (2013). Identifications were assigned by the BOLD-ID Engine where possible, allowing preliminary species inventories to be completed for each park and facilitating comparisons among them.

A key question concerning this program relates to whether Malaise traps are the most effective

method of capturing local arthropods. BIO is exploring this issue through a Standardized Sampling investigation in a subset of parks. In the selected parks, three sites were chosen and five standard collecting techniques were employed at each locality: Malaise, pan, pitfall, Berlese and flight-intercept traps, as well as sweep-netting. Each park was sampled by the BIObus staff for a one-week interval before the team proceeded to the next park with this weekly rotation continuing throughout the summer. All specimens collected with the different sampling methods were barcoded to permit a comparison among methods.

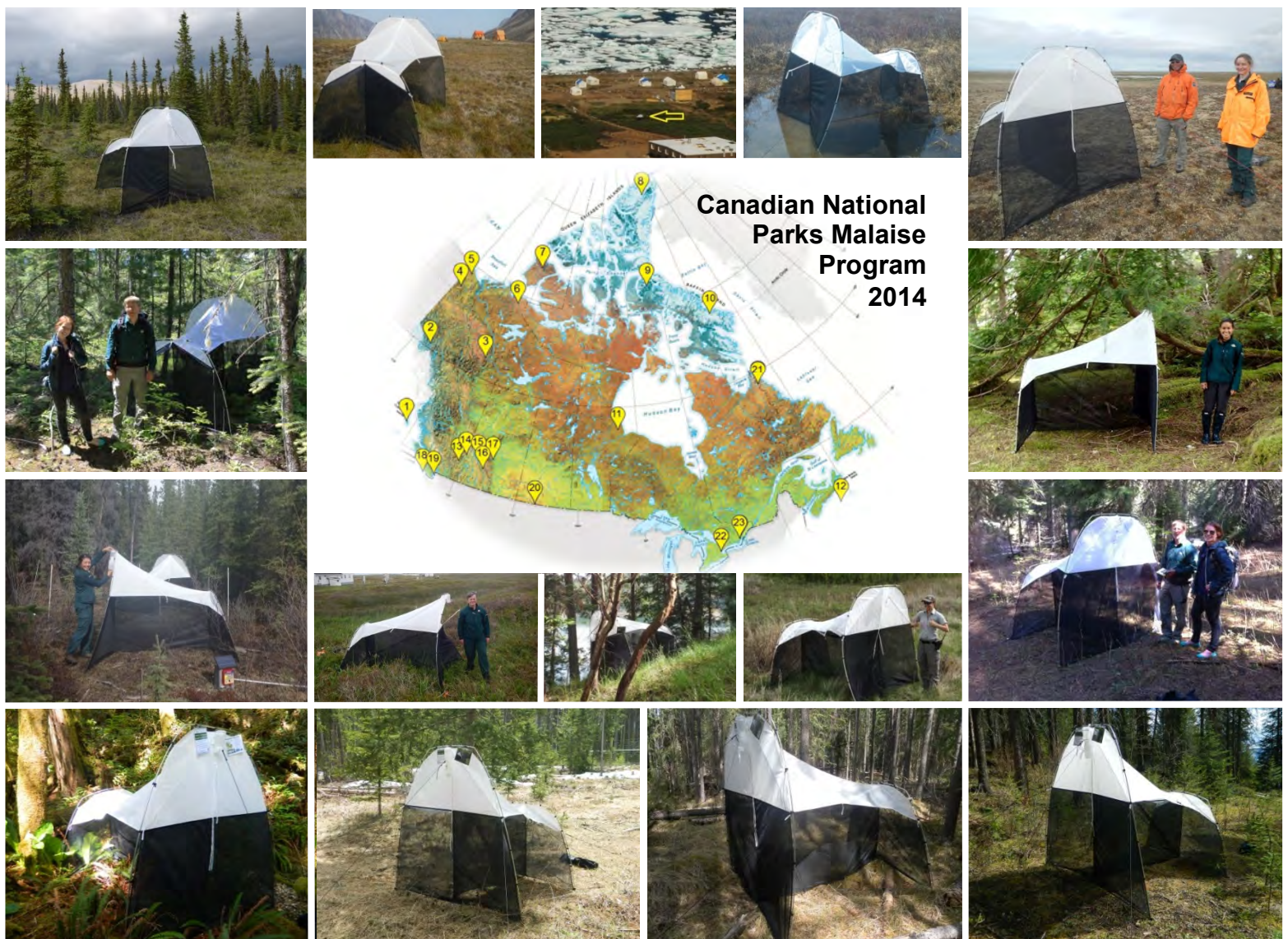


Figure 2. Sampling locations at 16 of the 23 Canadian National Parks surveyed in 2014.

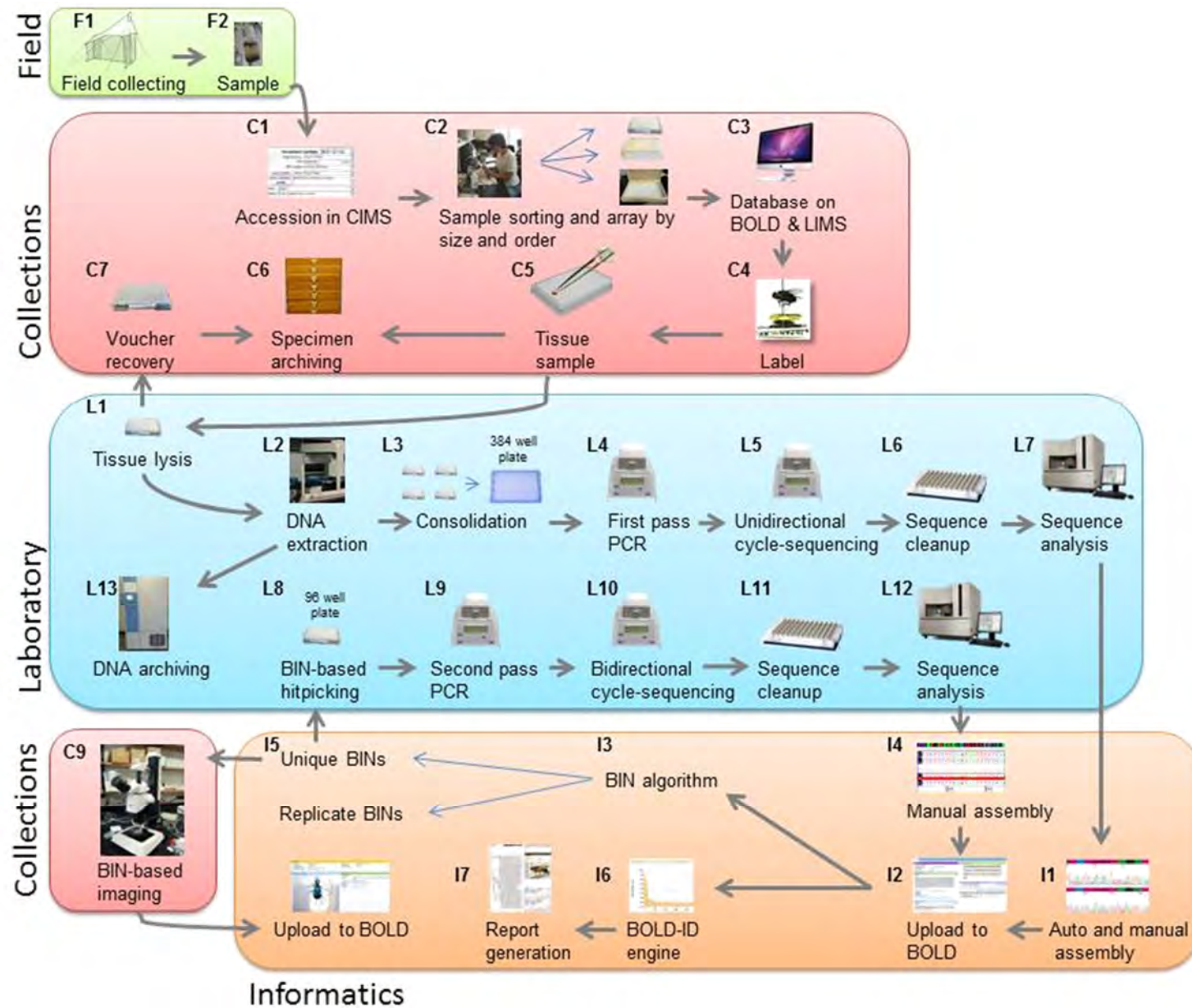


Figure 3. Schematic diagram showing the specimen workflow. Front end processing begins with field collecting (F1) and proceeds through to archiving of specimens (C6). Laboratory analysis begins with tissue lysis (L1) through to sequence analysis (L12). The informatics workflow includes both manual (I4) and auto sequence assembly, and finishes with BIN assignments and subsequent imaging of each BIN (C9).

2012-2014: RESULTS FOR 43 NATIONAL PARKS

The barcode analysis of all Malaise trap samples from 2014 was completed by fall 2015. In total, 339 weekly samples and nearly 295K specimens were analyzed. A total of 254,323 specimens generated barcode sequences that were long enough to allow a BIN assignment. Their analysis revealed a total of 30,335 BINs from the 2014 collection.

In combination with the 2012 and 2013 samples, the CNP Malaise program has

collected over 725K specimens to date. The average sequence success rate was 90% which led to 619,995 records with sequences long enough for a BIN assignment. A total of 36,423 BINs were revealed while the Chao 1 (Magurran, 2003) species estimate for the total number of BINs that would be encountered with complete sampling using this method would be 51,722 (Figure 4).

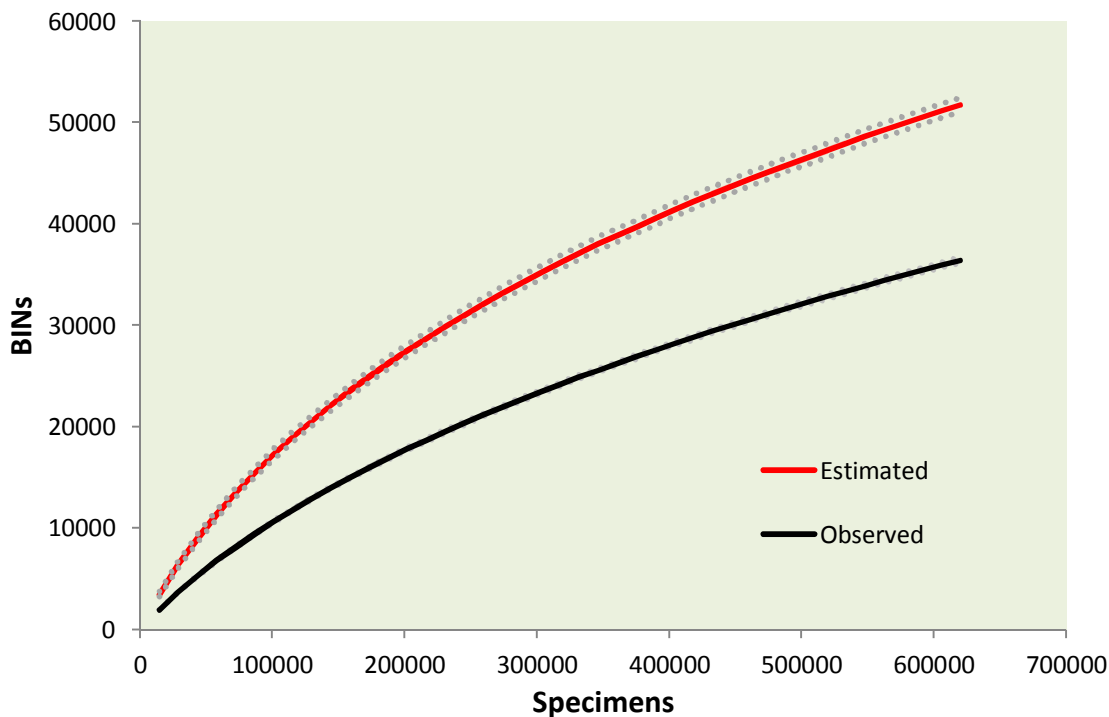


Figure 4. BIN accumulation curve for the 746 Malaise trap samples collected in 43 Canadian National Parks during 2012-2014.

The usual 'hollow curve' species abundance pattern was observed, with 12,942 species represented by just a single individual (singletons) (Figure 5). By comparison, just 1062 BINs were represented by 100 or more individuals. The most commonly encountered species was *Smittia* sp. – a non-biting midge belonging to the family Chironomidae – with 7243 individuals sequenced. Species richness

extrapolation using the lognormal species abundance distribution (Preston, 1962) suggests that nearly twice as many BINs exist in these 43 National Parks (61,760 BINs) as were collected. Despite the discrepancy between the two methods of estimating species richness (Chao and Preston), both results suggest that a considerable fraction of the species still awaits collection.

The average number of specimens collected per weekly sample was 1713. Only 14 of the 24 parks sampling in 2014 collected at least 10 weekly samples. Of these, the total number of individuals captured varied from a low of 6227 from 20 samples at Pacific Rim National Park to a high of 36,274 specimens from 10 analyzed samples in Grasslands National Park. Sequencing success also varied

among parks, from a low of 83.7% at Wapusk National Park (20,224 barcode records from 20,941 specimens), versus 98.5% for Auyuittuq National Park. The number of BINs detected ranged from a low of 78 at Auyuittuq to a high of 3795 at Thousand Islands (Figure 7).

These results are comparable to the BIN accumulation curves observed at Malaise

collecting sites that are part of BIO's Global Malaise Program (Figure 6). The total BIN richness in each National Park (mean = 1319 BINs) is generally less than those of highly diverse global sites (e.g. Argentina, Costa Rica). However, the slopes of the accumulation curves suggest that Malaise traps enable us to survey biodiversity at comparable rates across a range of biomes.

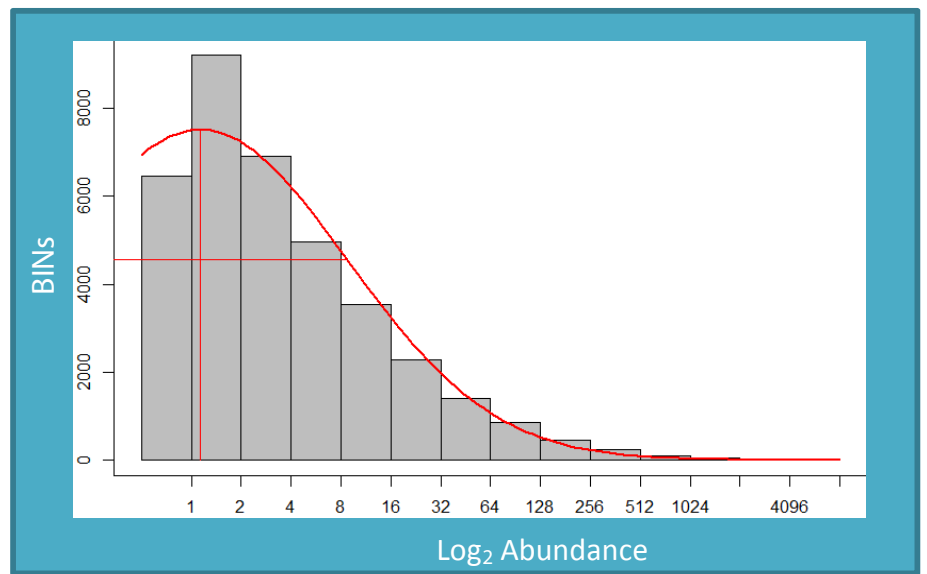


Figure 5. Lognormal species abundance curve, showing the total BINs within each \log_2 abundance frequency interval (Preston, 1962).

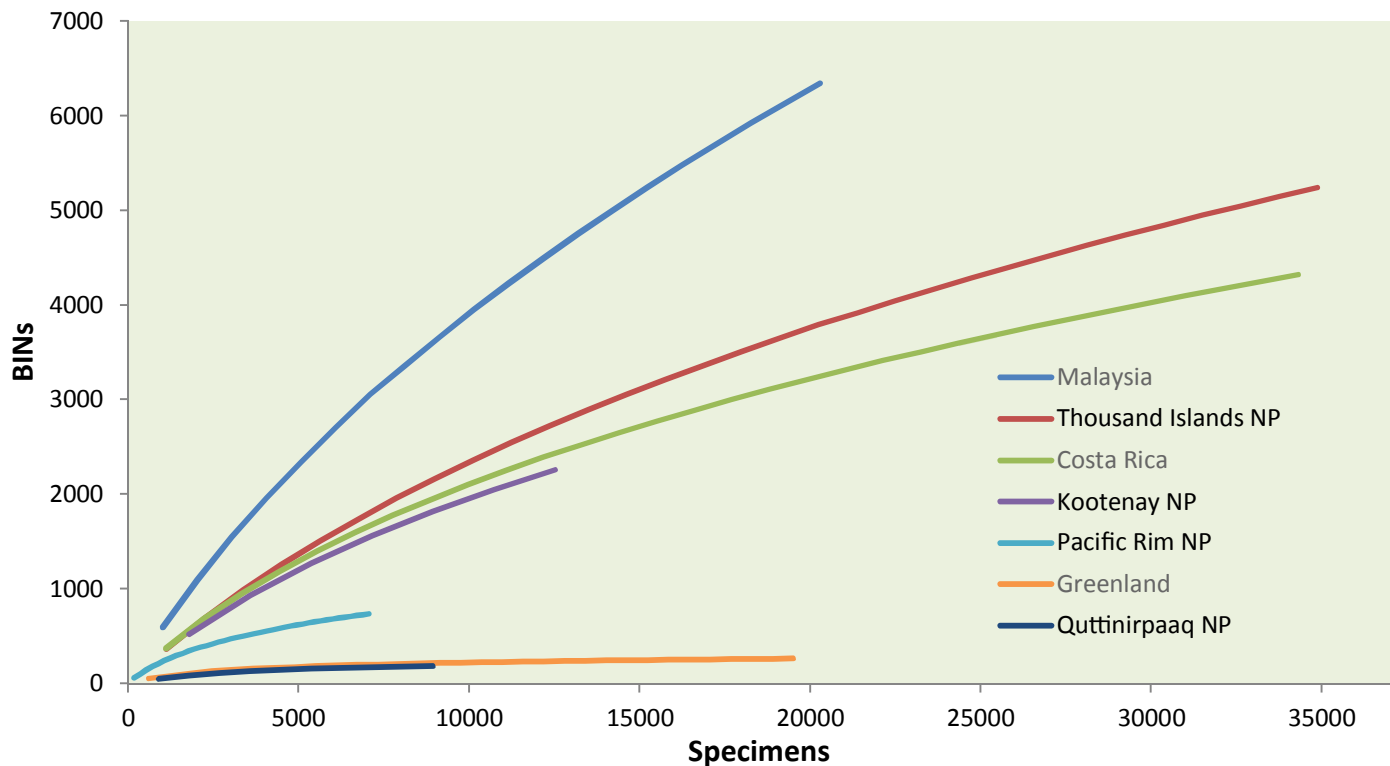


Figure 6. Comparison of BIN accumulation curves for 127 Malaise samples collected from 7 different sampling sites. Grey text indicates Global Malaise locations.

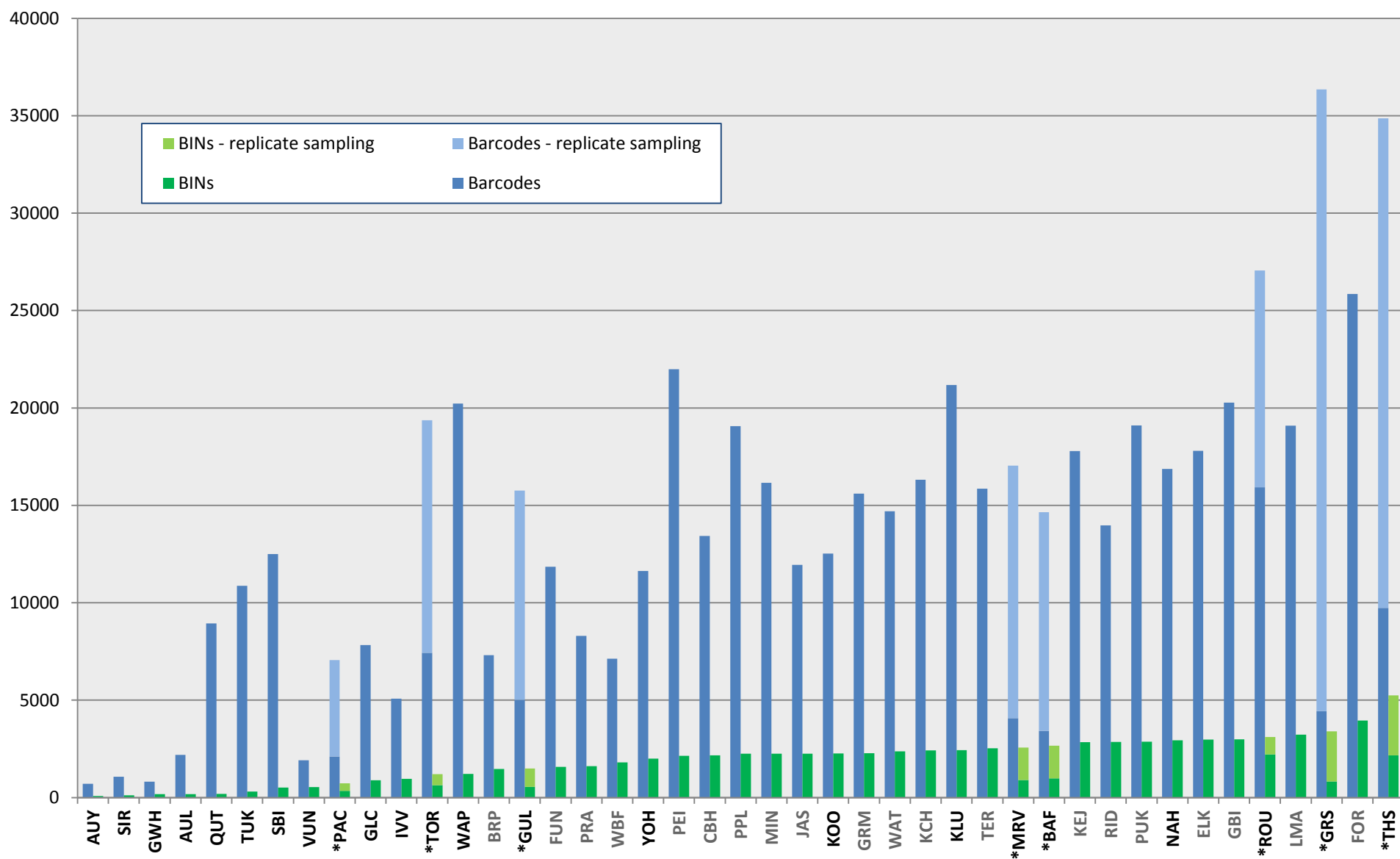


Figure 7. Total sequences and number of BINs generated from each of the 43 parks; grey text indicates 2012/2013 sampling (*repeated parks).

When analyzing all CNP Malaise Programs from 2012-2014, the number of BINs detected in each park was strongly influenced by sample size (Figure 8, $R^2 = 0.6873$, $p < 0.05$). With 29K specimens analyzed, Thousand Islands National Park displayed the highest BIN count (N = 3795), while Auyuittuq National Park captured less than 100 BINs from 727 specimens.

Of the 36K BINs captured, more than half were unique to a single collection site; i.e. 21,072 BINs occurred in only one of the 43 parks. The number of BINs unique to each park varied (Figure 9). Thousand Islands National Park exhibited the highest count of unique BINs with 35% of its BINs being unique to the site (1851 BINs of 5244). Despite having lower BIN counts, northern parks exhibited fairly average ratios of unique BINs to BINs captured (for example,

Auyuittuq 23%, Sirmilik 23%, Kluane 27%, and Nahanni 28%). Grasslands had the highest proportion of unique BINs with 51% of its BINs being unique. In contrast, Fundy National Park, with 203 unique BINs, had the lowest ratio of unique BINs to BINs captured, only 13%. Insular parks, such as Sable Island and Gwaii Haanas, also displayed high percentages of unique BINs. This indicates considerably high diversity despite the perception of low diversity given current sampling efforts.

The similarity in species composition between parks showed marked variation (Figure 10). For example, Gros Morne and Terra Nova National Parks – 301km apart – shared the highest proportion of BINs (938 shared species), with a Chao's Sorensen Similarity index (Chao et al., 2005) of 0.39.

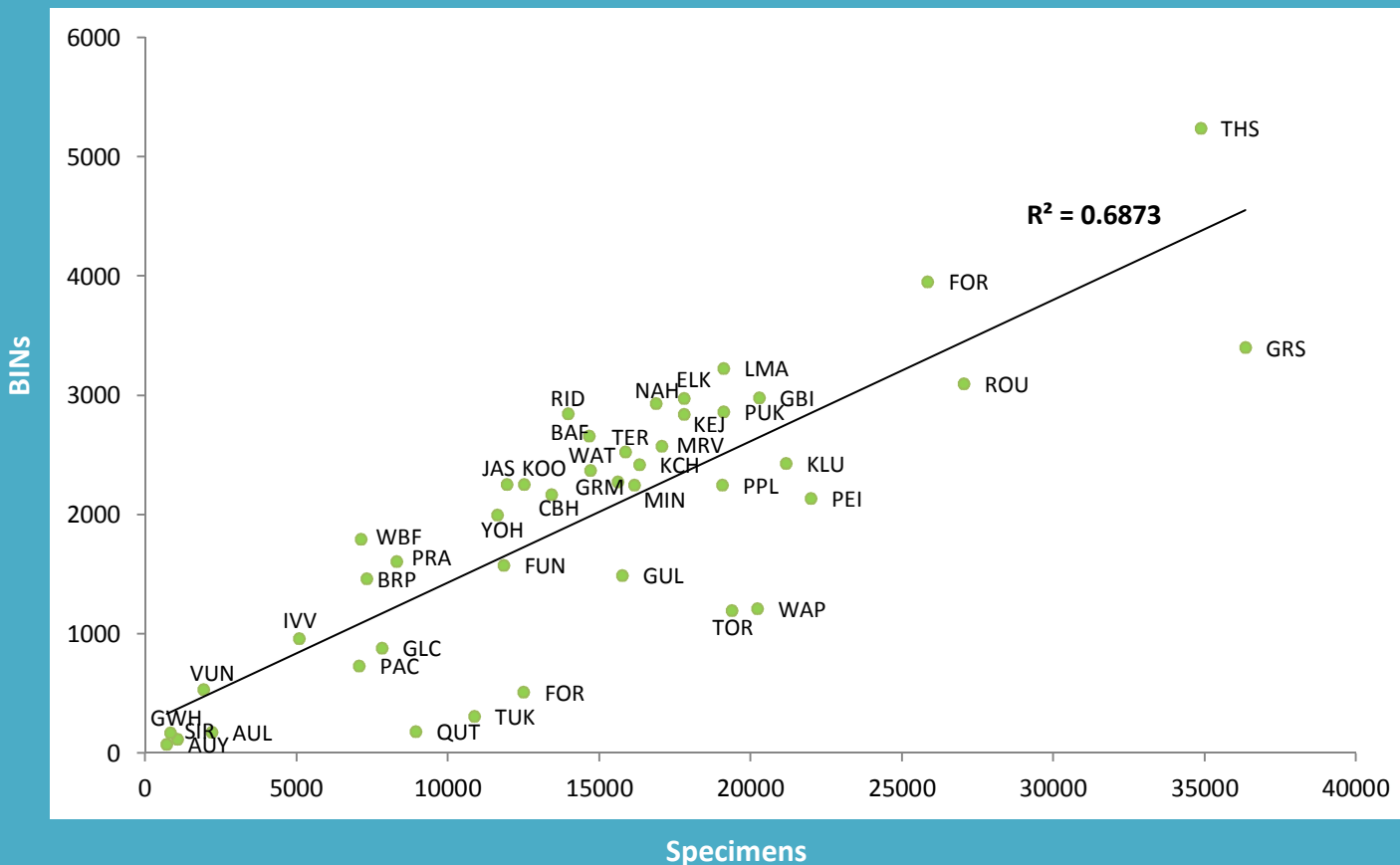


Figure 8. Regression analysis examining the relationship between the number of barcoded specimens and number of BINs (BINs = $0.1187(\text{Specimens}) + 243.18$).

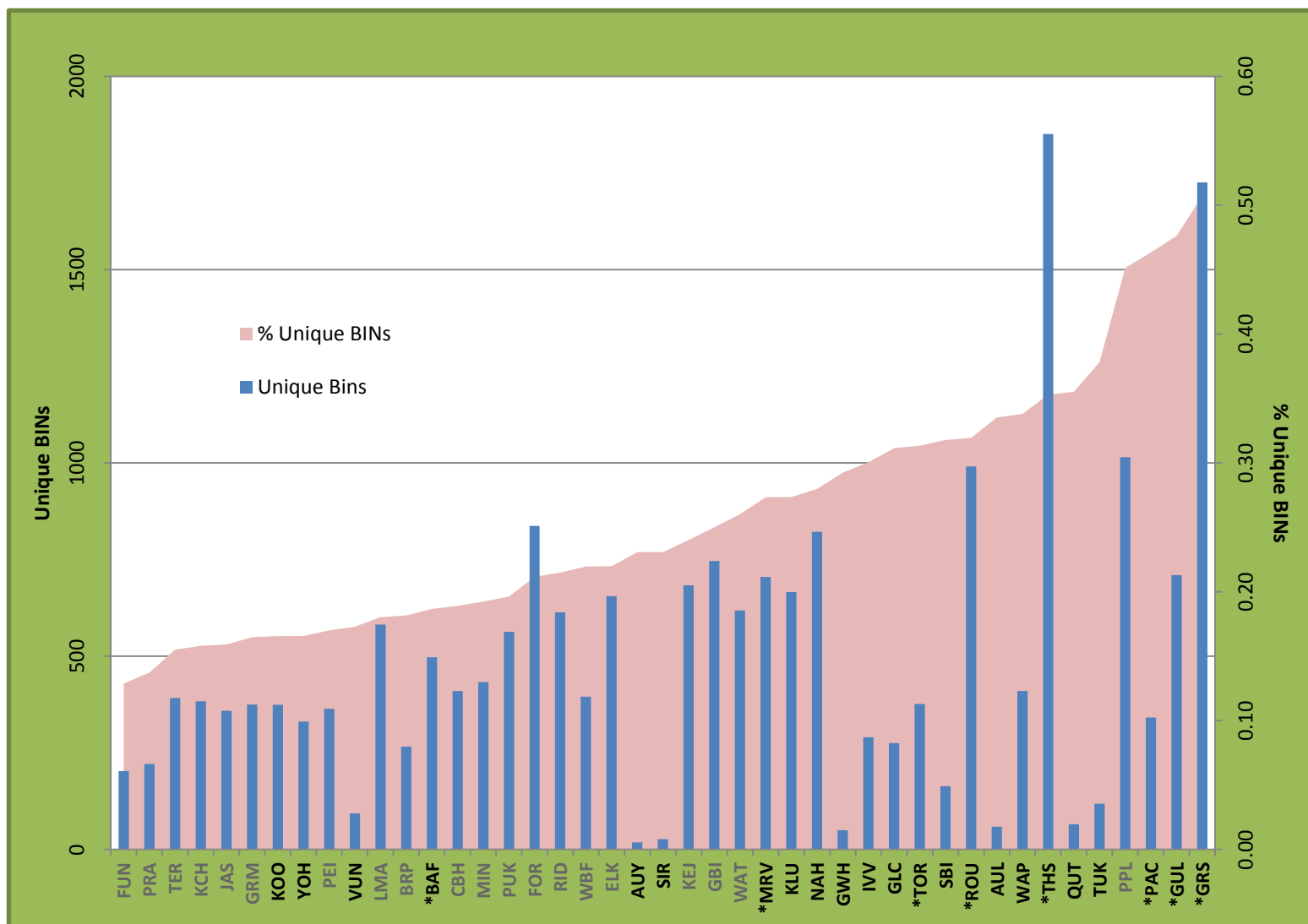


Figure 9. Total number of BINs unique to each park (bars) and the percentage of unique BINs collected in each park (Unique BINs/Total BINs); grey text indicates 2012/2013 sampling (*repeated parks).

The two parks closest together in geographic distance (only 45.7km apart), Banff and Kootenay, had a similarity index of 0.33. Surprisingly, the two parks furthest apart with a distance of 5228km, Kluane and Sable Island, still had a similarity index value of 0.02. Meanwhile, 19 other park-pairings shared no similar species (similarity index = 0.00). Although similarity indices were still shown to be negatively correlated to geographic distance between parks (Figure 11, $p < 0.05$), individual parks did not necessarily share the highest species with their nearest geographic neighbour (Figure 12). It is interesting to note that Torngat Mountains shared the most species with

Wapusk rather than Mingan Archipelago, which is 844km closer. This likely reflects the similar habitats and elevations between the two locations despite being further apart. It is tempting to make a similar hypothesis for the similarity index between Sable Island and Wood Buffalo. However, the more likely scenario is that the small sample size from Sable Island is the cause for this relationship. Collecting more of the diversity through repeated sampling in Sable Island may lead to the discovery of new BINs that are shared with parks closer in geographic distance than Wood Buffalo. Further sampling must be done to test either hypothesis.

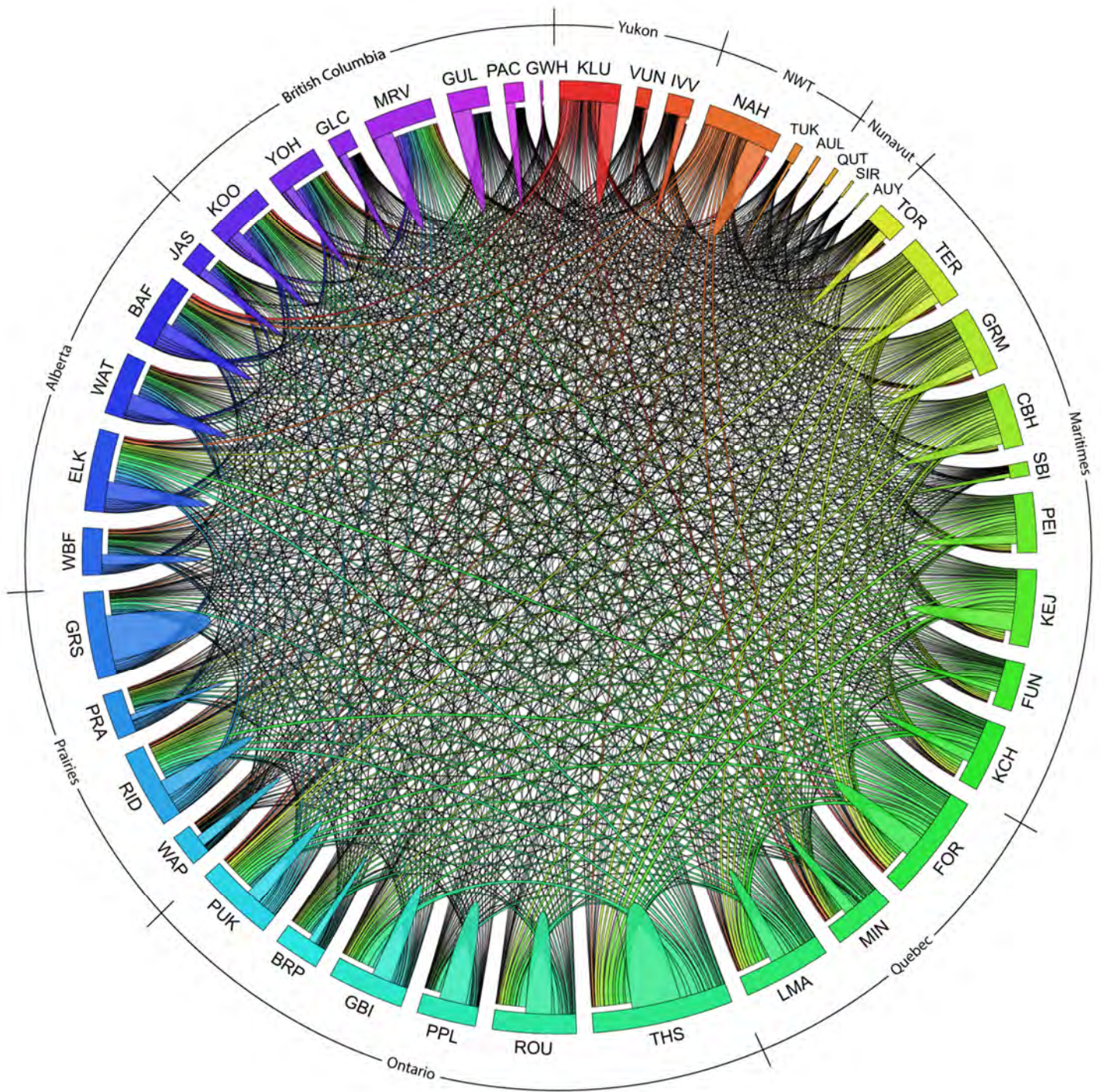


Figure 10. Chord diagram of species overlap between all 43 National Parks, organized by provinces and territories. The width of each wedge reflects the number of BINs captured in each park relative to the others. The widths of internal humps are proportional to the unique BINs within each park. Arcs connecting the parks reflect the proportion of shared species between any two parks, but have been scaled to account for BINs which are found in more than just two parks such that their widths are not directly proportional to the number of shared.

Figure 11. The relationship between geographic distance and species similarity. Similarity is based on Chao-Sorensen Raw Abundance data; each point represents a pair of locations. There is a significant negative correlation between the two variables ($p < 0.05$).

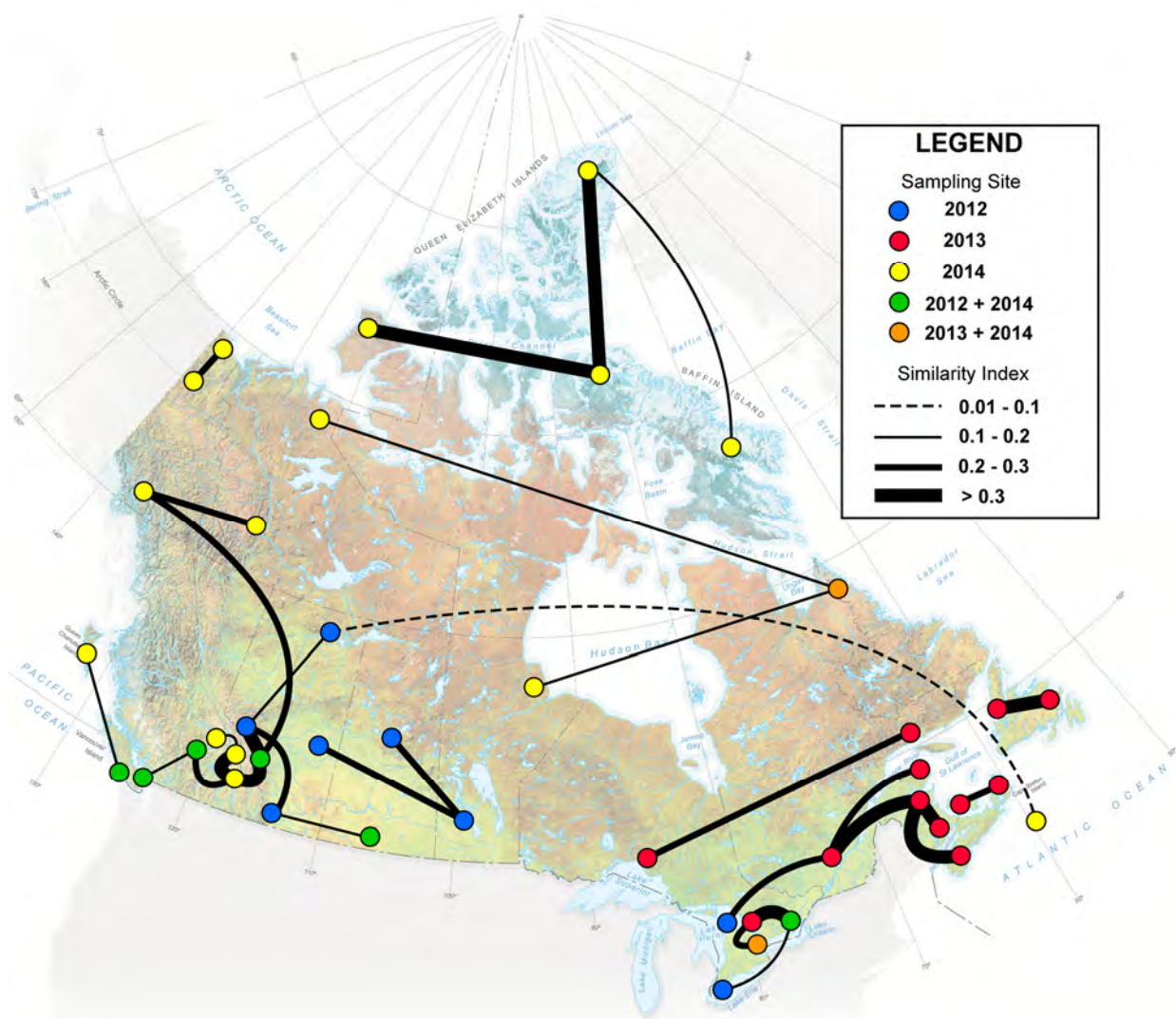
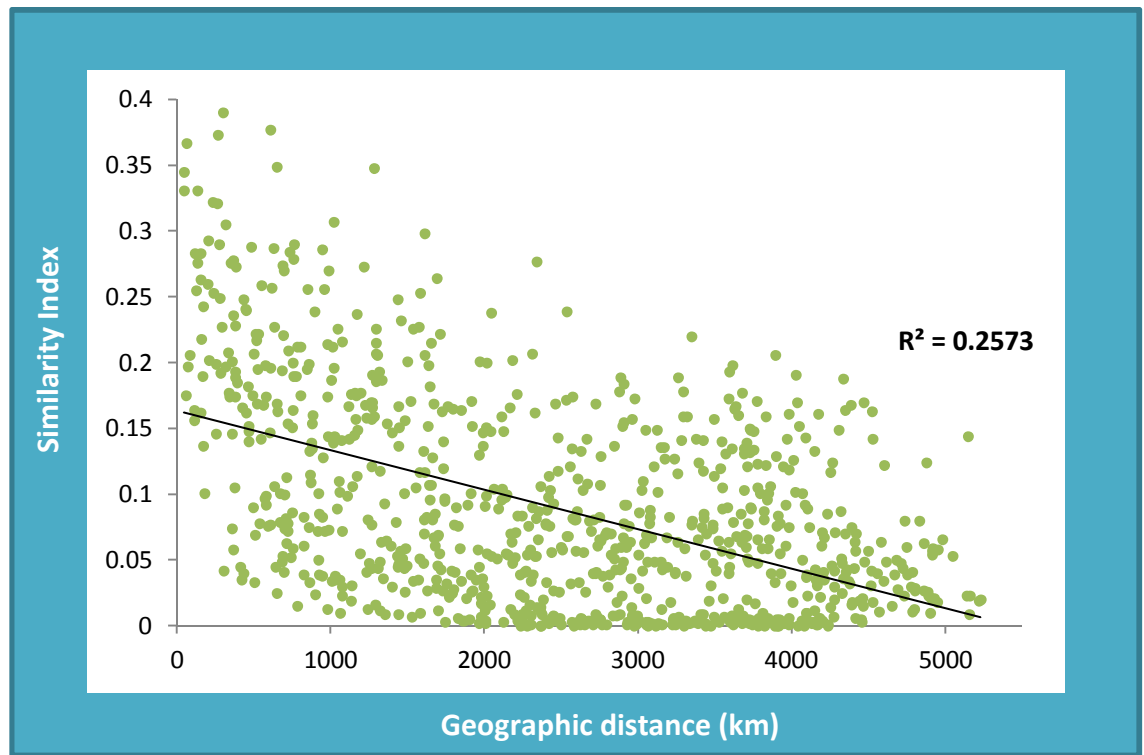


Figure 12. Map indicating the highest similarity index values for each park.

The Standardized Sampling Program was executed in a total of 23 national parks from 2012-2014 (Figure 13a). The processing of collected samples is still ongoing; however, preliminary results from a total of 17 standardized sampling weeks from 12 national parks are available. To date, the program has captured a total of 310,327 specimens from 42 sites after 994 individual collection events. The number of barcodes collected so far is 231,942 leading to the generation of 19,887 BINs. When comparing this to the CNP dataset, 12,207 of these BINs are shared between the two programs and the total number of BINs combined is 44,106.

Malaise traps captured more specimens ($p < 0.001$) than the other trap types (Figure

13b), revealing a significantly higher proportion of the local fauna (29% of total BINs, and 39% of unique BINs). Moreover, collector effort varied drastically between methods, with Malaise traps capturing the most specimens, BINs, and unique BINs per unit of time ($p < 0.05$). On the other hand, even though sweep netting appears to capture a high volume of specimens, it requires 15 times more effort than Malaise traps to be comparable.

The taxonomic diversity captured with each method also varied (Figure 14). As expected, Malaise, intercept, and pan traps captured more flying insects (flies, wasps, bees) while pitfalls and Berlese funnels captured more soil arthropods such as beetles and mites.

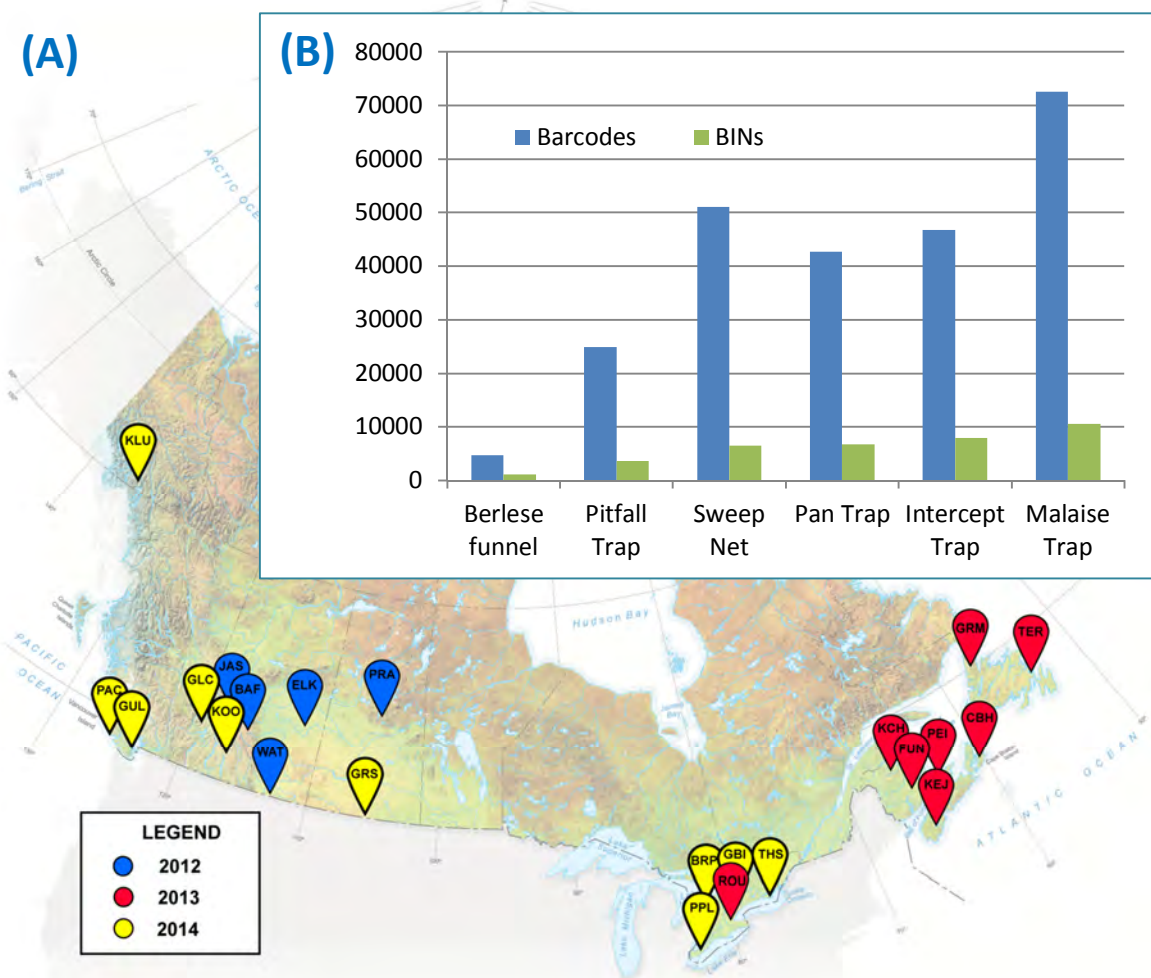


Figure 13. (A) Map indicating the parks where standardized sampling was conducted over 3 years. **(B)** Total number of sequences and BINs captured using different collecting methods.

Of the 19K BINs captured, more than half were unique to a single sampling method (N= 11,638). The number of BINs unique to each method varied and the majority of unique BINs were captured in Malaise traps (Figure 14). It is important to note that although Berlese funnels

collected the fewest unique BINs (N = 592), this method had the highest ratio of unique BINs to BINs captured (52%). The majority of these BINs belong to specimens from the subclass Acari (mites) and a large number of Collembola (springtail) BINs as well.

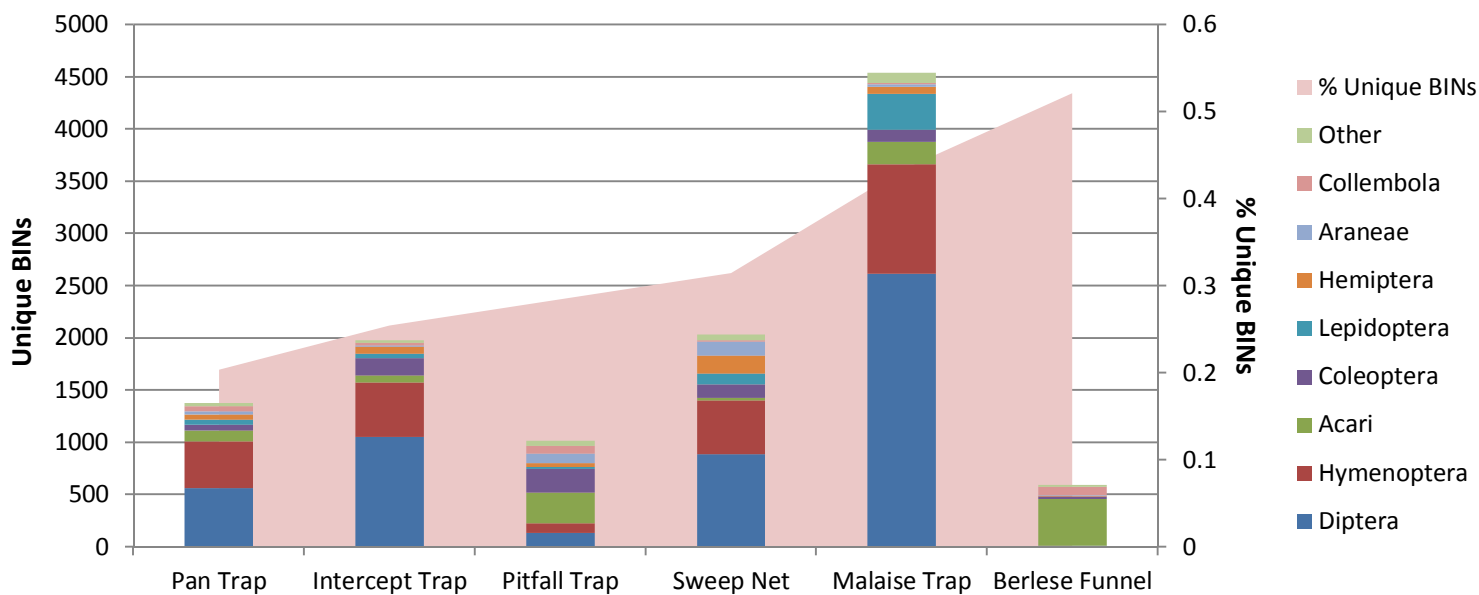


Figure 14. Total number of BINs unique to each collecting method and their taxonomic breakdown (bars) and the percentage of unique BINs collected with each method (Unique BINs/Total BINs).

The diversity of species collected by Malaise traps is impressive. The combined results from CNP Malaise Programs 2012-2014 included representatives for 36,423 BINs from 726,606 total specimens collected from Malaise traps in 43 Canadian National Parks. This BIN count represents 113% of the total number (N = 32,045) of terrestrial arthropod species recorded in all prior taxonomic studies, and 57.2% of the estimated total number of terrestrial arthropod species (N = 63,643) found in Canada (Mosquin et al. 1995).

BIO is edging closer to a comprehensive dataset to estimate alpha and beta diversity of the terrestrial arthropod fauna in our National Parks. Simultaneously, it is constructing the barcode reference library to rapidly and

accurately re-identify those species – a critical first step towards a terrestrial biotic index for Canada. The next step involves sampling diverse environments and disturbance regimes, as well as to examine replicate samples. We expect to then be able to link the condition of the environment with attributes of the community composition (for instance, the diversity of rare, indicator, pest, pioneer, and/or exotic species). As our reference barcode library for Canadian arthropods matures, the ability to conduct comprehensive terrestrial diversity assessments will strengthen. Ultimately, this will allow the calculation of a standardized terrestrial biotic index that can assist with determining how to balance ecological benefits with economic benefits associated with land management practices.

2014 RESULTS – BANFF NATIONAL PARK

Two Malaise traps were deployed approximately 10m apart in the pine forest near a stream in Lake Louise at Banff National Park (51.43583N 116.18763W, 1495m ASL, Figure 15). They collected arthropods weekly from May 22nd to September 25th 2014. Seventeen Malaise trap samples were analyzed which contained a range of 182 to 1595 specimens each. A total of 12,918 specimens were captured, and a barcode recovery rate of 91.2% was observed (Appendix 1-3). A total of 2014 BINs were observed from the 2014 sampling.

In combination with the 2012 CNP results, a total of 16,969 specimens have been collected from Banff. Over half the specimens collected were flies (Diptera), followed in abundance by bees, ants and wasps (Hymenoptera), true bugs (Hemiptera), moths and butterflies (Lepidoptera), and mites (Acari; Figure 16). The combined BIN count is 2661 with 337 BINs

shared between both sampling years. The Chao species estimate suggests that approximately 4794 BINs are present in the park and could be collected with this method if sampling effort was extended (Chao et al., 2005; Figure 17).



Figure 15. Malaise trap deployed at Banff National Park in 2014.

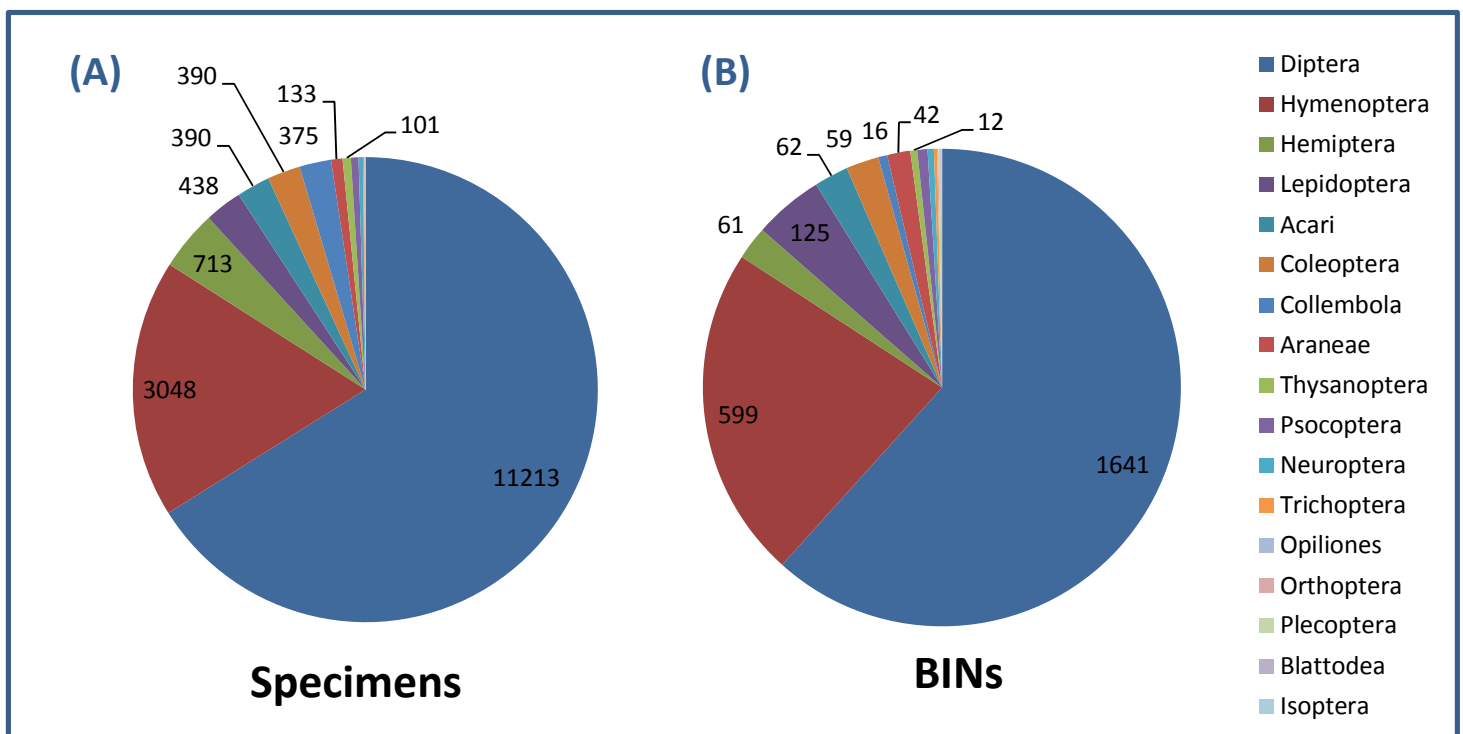


Figure 16. Taxonomic breakdown of (A) 16,969 total specimens and (B) 2661 total BINs collected by Malaise traps at Banff National Park in 2012 and 2014.

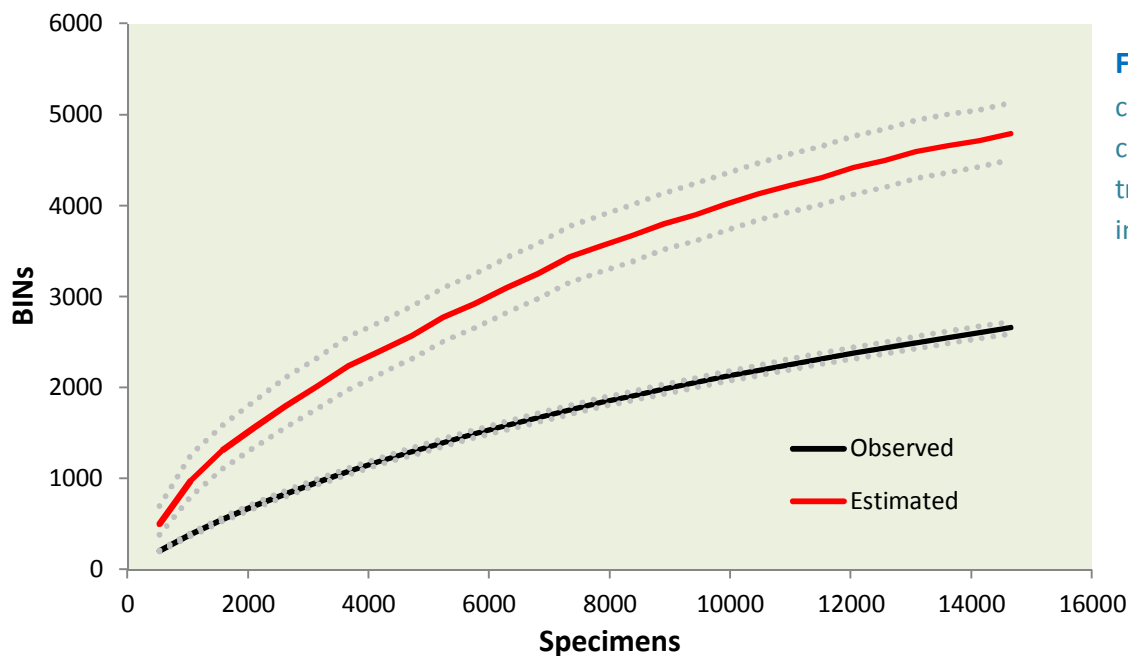
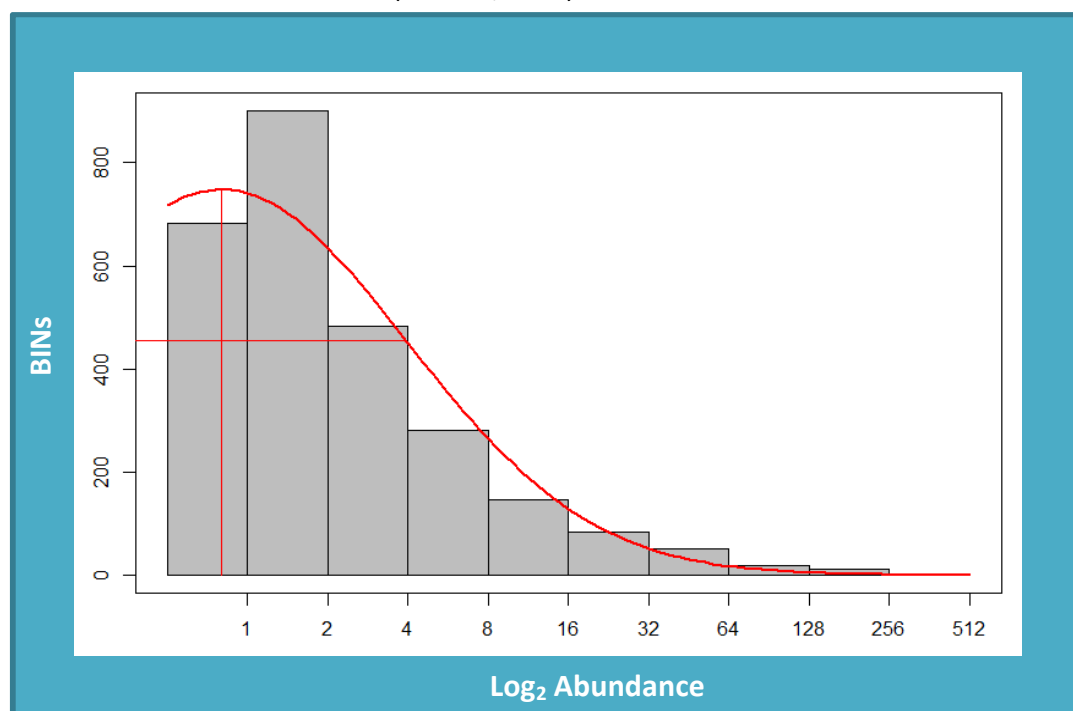


Figure 17. BIN accumulation curve for all specimens collected by the Malaise traps at Banff National Park in 2012 and 2014.

In total, 534 arthropod species were named, representing 21% of the BINs from the park (Appendix 4). 99% of BINs were assigned at least to family, and 47% of the BINs were assigned to a genus. Specimens collected from Banff represent 190 different families and 567 genera. Appendix 4 provides a complete list of specimens with available taxonomy and collection information. It is important to emphasize that it will be possible to identify many of the taxa which currently lack a species name as the barcode reference library becomes more complete.

The pattern of relative species abundance is quite typical, with a few species represented by many individuals (18 species with >100 individuals) – including 299 individuals of *Hydrophoria lancifer* (Diptera: Anthomyiidae) – and a large number of species with few individuals (1364 singletons; Figure 18). Some BINs were only collected in one of the two sampling years; 423 BINs were only collected in 2012 while 941 BINs were only collected in 2014. Species richness extrapolation using the lognormal species abundance distribution suggests that 5709 BINs exist in the park (Preston, 1962).

Figure 18. Lognormal species abundance curve, showing the total BINs within each \log_2 abundance frequency interval (Preston, 1962).



Standardized sampling was also carried out at Banff National Park in 2012. A total of 31,453 individuals comprising 3980 BINs were collected with the six sampling techniques (Appendices 5 & 6). Malaise trap was the most effective collection technique, resulting in 1731 BINs, followed by flight intercept trap and pan traps (Figure 19). Berlese funnels

captured the least amount of BINs ($N = 67$) but provided the second highest number of unique BINs among the trap types (after Malaise trap); 46% of its BINs were only captured using this method. The Malaise trap was responsible for capturing 43% of total arthropod BINs, and 34% of unique BINs.

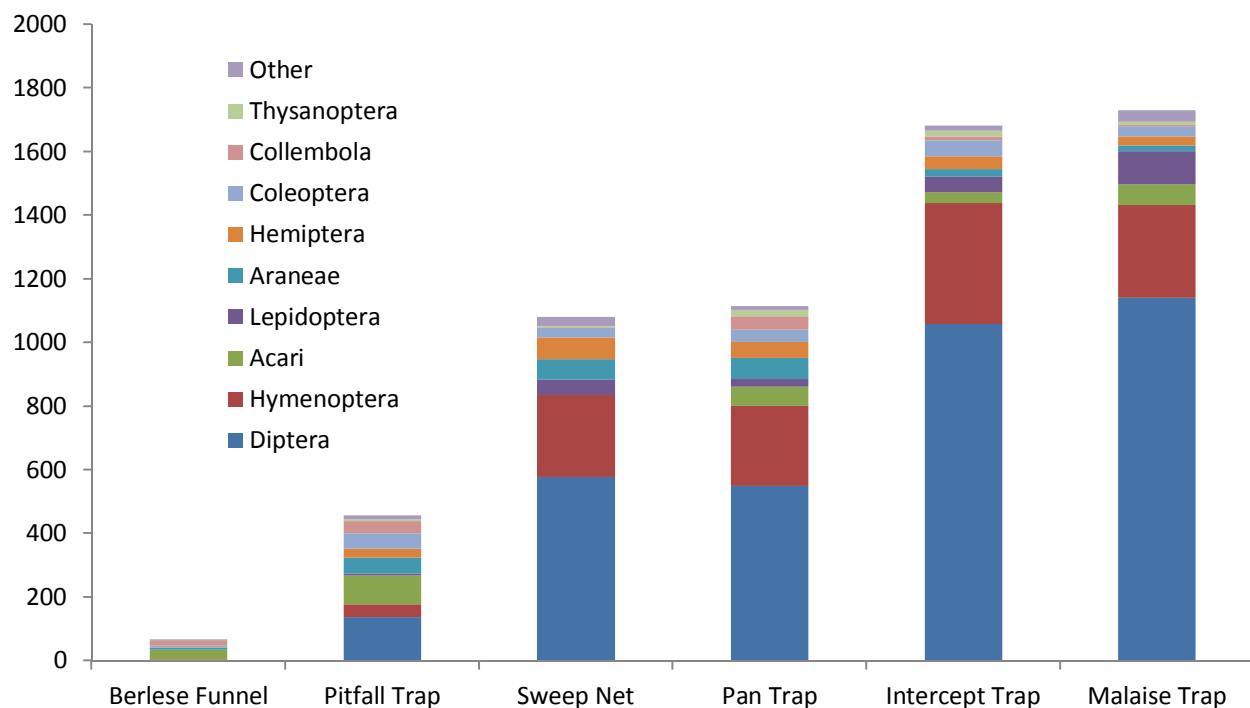


Figure 19. Total number of BINs captured (with colours indicating taxonomic breakdown) using different collecting methods through the standardized sampling program at Banff National Park in 2012.

In combination with the CNP Malaise Program, a total of 48,422 specimens and 5543 BINs have been collected in Banff National Park, with only 1098 BINs shared between both programs. As expected, most BINs were collected through Malaise traps ($N = 2581$, CNP and SS Malaise combined); however, a significant proportion (34% of total BINs) were unique to non-Malaise

traps. This indicates that while Malaise traps still provide the greatest abundance of specimens and BINs, sampling using other methods highly supplements the total number of captured species. This allows for a more complete picture of the arthropod diversity within the park.

REFERENCES

- Chao, A., R.L. Chazdon, R.K. Colwell, and T.-J. Shen (2005). A new statistical approach for assessing compositional similarity based on incidence and abundance data. *Ecology Letters* 8: 148-159.
- Hebert, P.D.N., A. Cywinska, S.L. Ball, and J.R. deWaard (2003). Biological identifications through DNA barcodes. *Proceedings of the Royal Society of London B* 270: 313-321.
- Magurran, A.E. (2003). *Measuring Biological Diversity*. Wiley-Blackwell, Malden, Massachusetts. 264 pp.
- Mosquin, T., P.G. Whiting and D.E. McAllister (1995). *Canada's Biodiversity: The Variety of Life, its Status, Economic Benefits, Conservation Costs and Unmet Needs*. Canadian Centre for Biodiversity, Canadian Museum of Nature, Ottawa, Ontario. 293 pp.
- Preston, F.W. (1962). The canonical distribution of commonness and rarity: Part I. *Ecology* 43: 185-215.
- Ratnasingham, S. and P.D.N. Hebert (2013). A DNA-based registry for all animal species: the Barcode Index Number (BIN) System. *Public Library of Science ONE* 8: e66213.

APPENDICES

- Appendix 1. Neighbour-joining tree of representative specimens from each BIN collected by the Malaise traps deployed at Banff National Park in 2012 and 2014 (colourized based on Taxonomic Order).
- Appendix 2. Image library of 2646 (out of 2662) BIN representatives collected in Banff National Park (in alignment with Appendix 1).
- Appendix 3. Taxonomy report for Banff National Park.
- Appendix 4. Complete data spreadsheet of all specimens collected from Banff National Park through the CNP Malaise Programs 2012 and 2014 with available taxonomy and collection information.
- Appendix 5. Neighbour-joining tree of representative specimens from each BIN collected through the Standardized Sampling program at Banff National Park in 2012 (colourized based on Taxonomic Order).
- Appendix 6. Complete data spreadsheet of all specimens collected from Banff National Park through the Standardized Sampling program 2012 with available taxonomy and collection information.



ACKNOWLEDGEMENTS

We are grateful for the overwhelming support of many people who have enabled the successful execution of the Canadian National Malaise Program over the past three years. Special thanks to Parks Canada for their partnership in this program. Additionally, this project would not have been possible without the indispensable staff at the Biodiversity Institute of Ontario, and the many students who embarked on the cross country BIObus journeys.

Contacts:

Jeremy deWaard, PhD
Director of Collections
dewaardj@uoguelph.ca

Kate Perez, MSc
Field Operations Lead
kperez@uoguelph.ca



Biodiversity Institute of Ontario

University of Guelph,
50 Stone Road East,
Guelph, ON, Canada N1G 2W1
519-824-4120 x56393
Fax: 519-824-5703



Ontario Genomics Institute



Genome Canada



NSERC
CRSNG



Ontario
MINISTRY OF
RESEARCH AND INNOVATION

INNOVATION.CA

CANADA FOUNDATION
FOR INNOVATION
FONDATION CANADIENNE
POUR L'INNOVATION